

Easy, it's Mocom

Sterilization first



Introducing Autoclave range



Our vision

Quality and technological innovation

For over twenty-five years safety, reliability and forward thinking have been the guiding principles behind all aspects of design and production at Mocom, the world's leading sterilization firm. The factors that set us apart, in terms of both skill and innovation, are conscientious attention to the choice of materials, ground-breaking technology, enforcement of strict production/quality control protocols and the wealth of experience accumulated by our qualified, specialised sterilization system designers.

Mocom, sterilization first.



Autoclaves range

A solution for all your needs



A solution for all your needs

- **B Classic**

B Classic simplifies the operator's work, optimizing times and costs. Quality and high-level functions ensure safety, reliability and ease of use with the monochrome display and keypad.

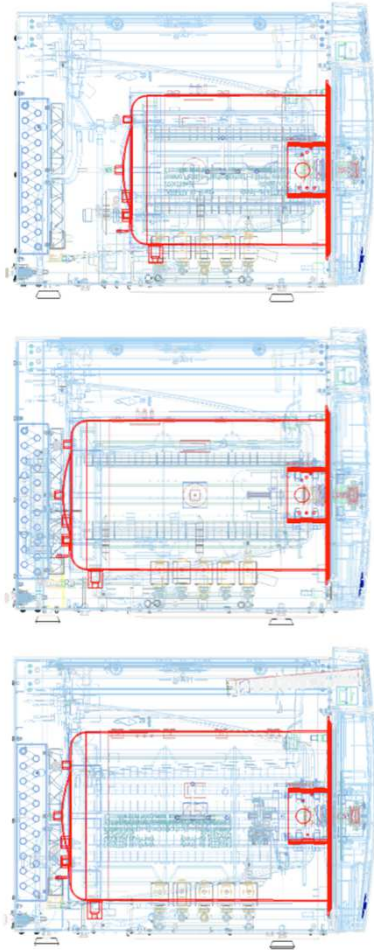
- **B Futura**

Thanks to its integrated demineralising filter, Futura can operate using tap water with a stand-alone machine. This model features a 4.3" touch screen display.

- **Supreme**

Supreme is the first autoclave that can operate with tap water and treat used water, making it available once more for sterilisation. Its large 7" display makes it unique in its class.





Three models for three sizes

Models:

Classic, Futura and Supreme:

These are the three models that make up the Mocom autoclave range. Different machines, with distinct characteristics and performances, to allow users to choose the right one for their own needs.

Sizes:

Three available sizes: 17, 22 and 28 litres.

The external dimensions, identical for all three machines (485 x 600 x 495 mm), allow simple installation.

The 17 and 22-litre models have five trays and the 28-litre model has six.

B Classic





LCD display with keypad

Simple display:

The LCD display with keypad features clear user-friendly icons. The operator's task is made easier and faster thanks to on-display availability of all data. Easy to install, a simple guided procedure aids the initial configuration.



Water management

Water filling

The doors on the upper part of the sterilizer allow the operator to reach the tanks to fill them with demineralized water and clean them.

As an alternative to upper loading, the front quick couplings can be used to empty the tanks and to feed in demineralized Water.

INSIDE THE FILLING TANK



Conductivity sensor

Inside the filling tank:

The in-tank sensor checks water quality to ensure a correct and long-lasting machine operation



Cycle reports

PDF and internal memory:

The cycle reports are saved automatically inside the sterilizer's memory. Later on, they can be downloaded through the front USB port. The files in PDF format can be displayed on any device.



Wifi ed Ethernet

Total connectivity:

All the machines in the Classic range are designed with integrated Wi-Fi and a rear Ethernet port for connecting the autoclave to the studio network and the Internet. In an increasingly digital world, Classic lets you stay connected.



DataSer

Automatic download program:

Supplied as standard with the machine, DataSer is used to perform the automatic download of cycle reports directly to a network or PC folder. At the end of each cycle, the sterilizer sends the PDF file to the selected folder. Simple to install and configure, DataSer automatically saves cycle reports to a PC or network folder.



EasyCheck

Remote technical support:

All sterilizers of the Classic range are equipped with incorporated WiFi and Ethernet port.

Connected to the Internet by enabling the Easy Check service, they can receive remote support. Intervention times can be significantly reduced thereby allowing technicians to keep machines constantly efficient.

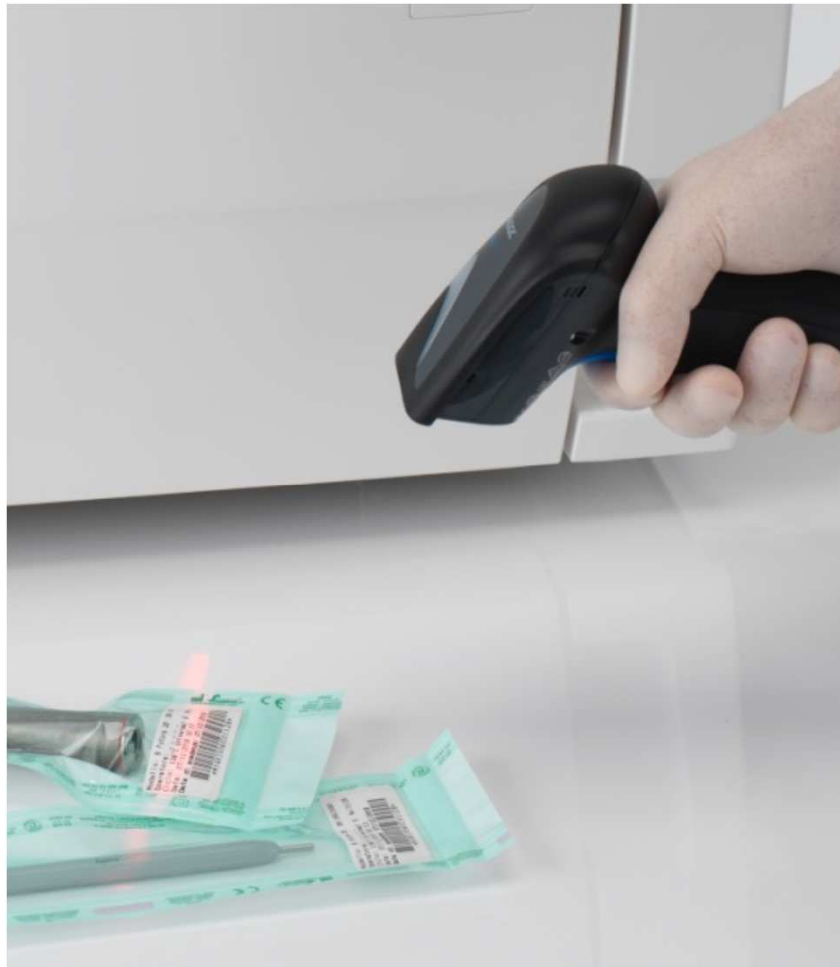


Printers

The Classic range can be completed with a printer available as optional accessories:

Standard printer:

An external printer that generates reports or bar code labels.



MyTrace

Traceability software:

MyTrace is Cefla's traceability software supplied with Classic. By using this program, each set of sterilized instruments can be associated to the patient through a bar code. This essential software completes the sterilization process and provides legal protection to dentists.



Functionality

Delayed start

Thanks to the delayed start option it is possible to postpone the start of the machine cycles, thereby optimising its usage.

Extra drying

This function is used to set customised drying times for demanding loads..

Custom cycle

Cycle parameters can be set to meet specific user needs (in complete safety) by choosing from among a wide range of standard-compliant values..

PIN

Authorises personnel in charge to get access to the sterilizer. By entering a security code (PIN number), operators can keep track of the usage history of the machine while ensuring process control.



Test reminder

Pop Up

By setting this function on the display, Classic will inform the user when a Vacuum Test, Helix Test or Bowie & Dick test must be carried out. Therefore, it will become impossible to forget about these important operations.

B Futura



In common with Classic

PDF and internal memory:

PDFs saved in the internal memory and downloaded via USB

Total connectivity:

All the machines in the Classic range are designed with integrated Wi-Fi and a rear Ethernet port for connecting the autoclave to the studio network and the Internet.

Automatic download program:

Supplied as standard with the machine, DataSter is used to perform the automatic download of cycle reports directly to a network or PC folder.

Remote technical support:

All sterilizers of the Classic range are equipped with incorporated WiFi and Ethernet port. Connected to the Internet by enabling the Easy Check service, they can receive remote support.

Standard printer:

An external printer that generates reports or bar code labels.

Traceability software:

MyTrace is Cefla's traceability software supplied with Classic. By using this program, each set of sterilized instruments can be associated to the patient through a bar code.

Delayed start

Thanks to the delayed start option it is possible to postpone the start of the machine cycles, thereby optimising its usage.

Extra drying

This function is used to set customised drying times for demanding loads..

Custom cycle

Cycle parameters can be set to meet specific user needs (in complete safety) by choosing from among a wide range of standard-compliant values..

PIN

Authorises personnel in charge to get access to the sterilizer. By entering a security code (PIN number), operators can keep track of the usage history of the machine while ensuring process control.

Pop Up

By setting this function on the display, Classic will inform the user when a Vacuum Test, Helix Test or Bowie & Dick test must be carried out. Therefore, it will become impossible to forget about these important operations.

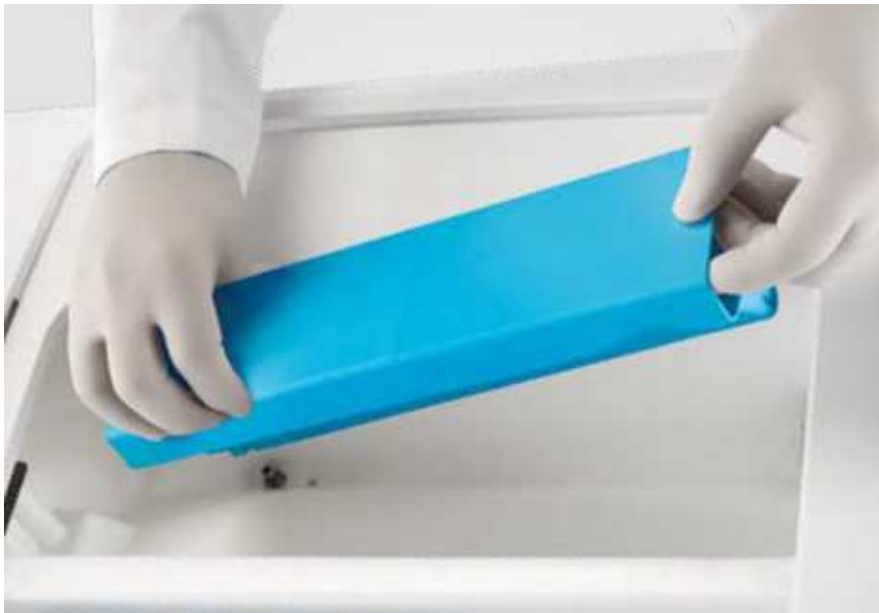


Display 4,3'' touch

Ease of use

The B Futura sterilizer is a smart and essential working tool that ensures excellent performance also thanks to the colour LCD touch screen and user-friendly interface.

Each control corresponds to icons that ensure an immediate reading of the machine status.



Tap water

Internal filter

Unlike traditional sterilizers, Futura does not require any external water connection for mains water treatment. Thanks to the demineralisation filter on the main tank, the user can fill the latter with plain tap water, thereby significantly optimising spaces, streamlining processes and achieving considerable savings. Futura's different filtration systems guarantee unprecedented ease of operation. Facile da mantenere, il filtro non richiede la presenza di un tecnico per la sostituzione.

Water conductivity sensor:

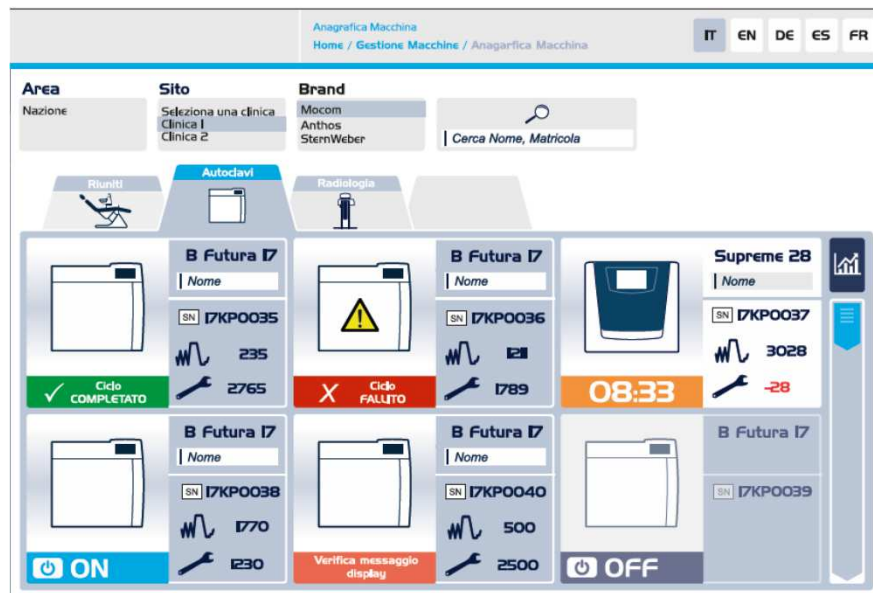
The in-tank sensor checks water quality to ensure a correct and long-lasting machine operation



Efficiency and saving

Some of its incredible advantages:

The incorporated system makes it possible to increase the surgery efficiency, eliminating demineralized water management issues. Recipients' storage and deterioration of machine internal components caused by poor water quality will be a thing of the past. Never before has a sterilizer provided such high performance and low usage costs. Since water is demineralized by Futura's filter, the user does not need to source demineralized water: they will only have to fill up the machine tank with tap water.



Di.V.A.

Cloud:

Di.V.A. stands for Digital Virtual Assistant. It is the first cloud-based control and traceability system for MOCOM sterilization devices. Once saved, data will be available for operators by accessing a dedicated web page.

Di.V.A. allows you to:

- Get access to tutorial videos
- Display the executed cycles
- Check machine efficiency and status
- Read the machine usage statistics
- Monitor the frequency of sterilization tests

Supreme



In common with Futura

PDF and internal memory:

PDFs saved in the internal memory and downloaded via USB

Total connectivity:

All the machines in the Classic range are designed with integrated Wi-Fi and a rear Ethernet port for connecting the autoclave to the studio network and the Internet.

Automatic download program:

Supplied as standard with the machine, DataSter is used to perform the automatic download of cycle reports directly to a network or PC folder.

Remote technical support:

All sterilizers of the Classic range are equipped with incorporated WiFi and Ethernet port. Connected to the Internet by enabling the Easy Check service, they can receive remote support.

Standard printer:

An external printer that generates reports or bar code labels.

Traceability software:

MyTrace is Cefla's traceability software supplied with Classic. By using this program, each set of sterilized instruments can be associated to the patient through a bar code.

Delayed start

Thanks to the delayed start option it is possible to postpone the start of the machine cycles, thereby optimising its usage.

Extra drying

This function is used to set customised drying times for demanding loads..

Custom cycle

Cycle parameters can be set to meet specific user needs (in complete safety) by choosing from among a wide range of standard-compliant values..

PIN

Authorises personnel in charge to get access to the sterilizer. By entering a security code (PIN number), operators can keep track of the usage history of the machine while ensuring process control.

Pop Up

By setting this function on the display, Classic will inform the user when a Vacuum Test, Helix Test or Bowie & Dick test must be carried out. Therefore, it will become impossible to forget about these important operations.



Display 7" touch

Ease of use

The large touch screen display, positioned centrally on the machine, allows it to be used simply and intuitively, like a tablet. The user has constant access to necessary data and can view all useful information on the screen.

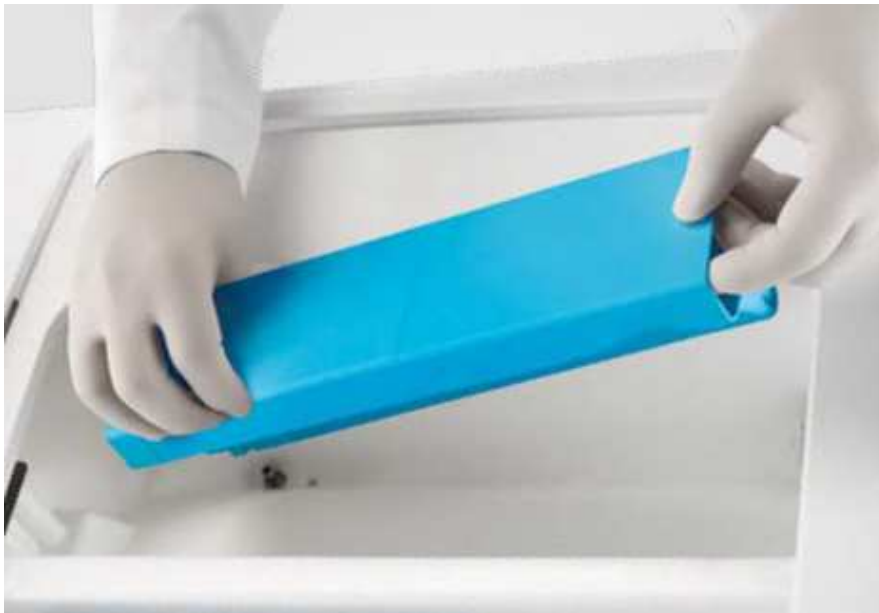
50 STERILIZATION
CYCLES WITH JUST 5
LITRES OF TAP WATER



50 sterilization cycles with just 5 liters of tap water

Consumption is approx. 100 ml/cycle:

We developed the first closed-loop sterilizer that uses mains water through a specific internal filtration system that recycles water to be reused in the following cycles. This performance eliminates waste, reduces costs and ensures a significant increase in the efficiency of any modern dentistry surgery. It also solves all issues relating to demineralized water storage and supply.



Tap water

Internal filter

Unlike traditional sterilizers, Futura does not require any external water connection for mains water treatment. Thanks to the demineralisation filter on the main tank, the user can fill the latter with plain tap water, thereby significantly optimising spaces, streamlining processes and achieving considerable savings. Futura's different filtration systems guarantee unprecedented ease of operation. Facile da mantenere, il filtro non richiede la presenza di un tecnico per la sostituzione.

Water conductivity sensor:

The in-tank sensor checks water quality to ensure a correct and long-lasting machine operation



Used water treatment

Recirculation filter:

The nano-ceramic recirculation filter, incorporated into the secondary tank, makes it possible to distil and purify water so that it can be reused in the following sterilization cycle. The built-in conductivity sensor ensures compliance with water quality parameters as it protects the machine internal components from excess lime. Total consumption is 5 litres per 50 cycles, meaning approx. 100 ml/cycle, a real revolution.



Light communication

Frontal LED:

Supreme can also communicate through colours. A door built-in LED bar provides immediate information to the user about the machine status, changing colours according to the different work phases. The user will be able to understand at a glance which is the current process phase of the sterilizer, even at a distance.



Video tutorial

Instructions on the screen:

Through its colour display, Supreme provides video tutorials and important information for using and maintaining the machine. Everything is explained in simple videos: from information about load positioning to instructions for filter replacement. A personal assistant providing support to all operators.



NFC

Near field communication

Through NFC, Supreme improves the assistant's workflow. Instead of entering a PIN code, assistants will be able to register themselves by simply placing a special user card, provided with the machine, near the display. By activating the user ID, access to the machine functions will be allowed to authorized personnel only.



Printers

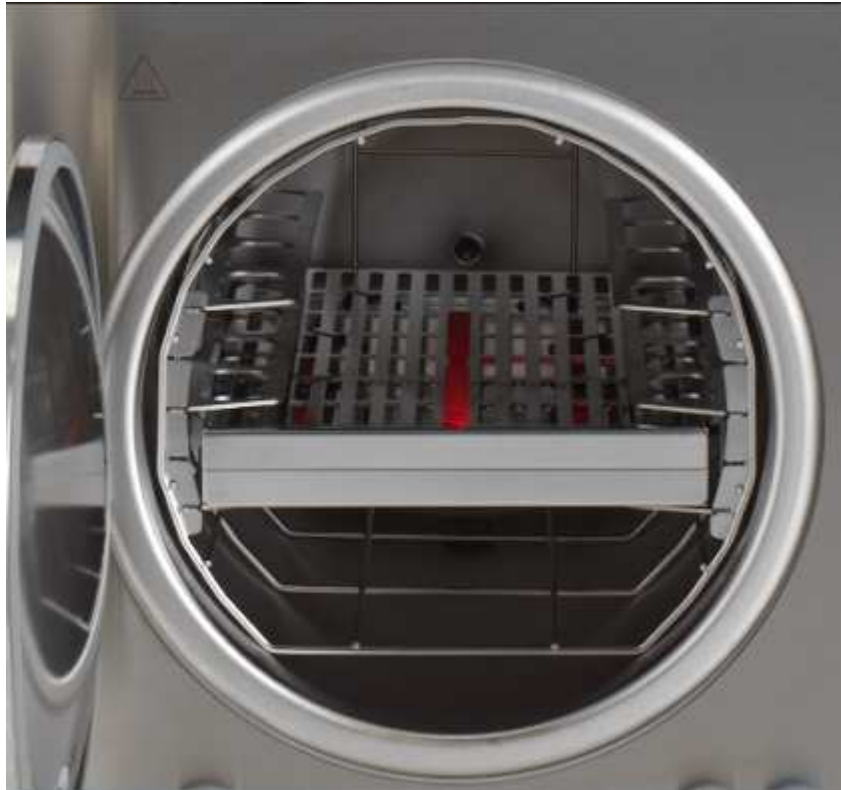
The Supreme range can be completed with 2 printers available as optional accessories:

Standard printer:

An external printer that generates reports or bar code labels.

Network printer:

A wireless network printer that can be used simultaneously on more sterilizers for printing reports, simple labels or bar code labels.



Accessories

Modular tray holder:

Modular housing system for filling the sterilizer. Provided with 3 pairs of shelves, it allows for the full use of the chamber diameter and the introduction of even cumbersome loads.

Bar code reader:

The bar code reader, usable on the most common PCs, makes it possible to complete the traceability process and associate bar code labels to patients.



Water filling kit

Front filling kit:

Allows the operator to fill the main tank frontally through a quick coupling.

Automatic filling kit:

Consists of an external pump powered by the sterilizer and allows water to be withdrawn from an external tank to fill the main tank.

SV aux kit:

This kit allows the sterilizer to be interfaced with the surgery water supply system so the sterilizer only draws water from the system as and when necessary.



Demineralisers

Pure 100:

The Pure 100 resin demineraliser consists of two ion exchange resin cartridges. This system eliminates the ions that contaminate mains water, allowing high quality demineralised water to be produced. The system is fully controlled by the sterilizer, which tells the operator when the cartridges need replacing; replacement is completed in a few short, simple steps.

Pure 500:

The Pure 500 reverse osmosis demineraliser is an ecological system that ensures, cycle after cycle, a proper supply of demineralised water to Mocom autoclaves. Passing the mains water through an osmotic membrane eliminates both organic and inorganic substances, resulting in water that is perfect for sterilization. The autoclave has a visual/ acoustic warning system that tells the operator when it is necessary to change filters, thus ensuring performance.

Kit Twin Pure 500:

Thanks to this Kit, the Pure 500 demineraliser can be used simultaneously on two sterilizers.

Pure 100 & Pure 500

Technical Features	PURE 100	PURE 500
Water input	Mains water	Mains water
Water output (conductivity)	< 15 $\mu\text{S}/\text{cm}$	< 15 $\mu\text{S}/\text{cm}$
Distilled water output (inlet water conductivity approx. 350 $\mu\text{S}/\text{cm}$)	120 litri	800 litri
Min. and max. mains water pressure	1-5 bar	1-5 bar
Min. and max. mains water temperature	+5°C ÷ +40°C	+5°C ÷ +40°C
Dimensions LxHxD	366 x 365 x 143 mm	461 x 328 x 206 mm
Weight	3,5 kg	5,5 kg



Technical data

Accessories	B Classic	B Futura	Supreme
Pure 100	<input type="radio"/>		
Pure 500	<input type="radio"/>		
Kit Twin Pure 500	<input type="radio"/>		
Automatic filling kit	<input type="radio"/>	<input type="radio"/>	<input type="radio"/>
Kit SV Aux	<input type="radio"/>	<input type="radio"/>	<input type="radio"/>
Frontal filling kit	<input type="radio"/>	<input type="radio"/>	<input type="radio"/>
Std Printer	<input type="radio"/>	<input type="radio"/>	<input type="radio"/>
Network printer	<input checked="" type="radio"/>	<input checked="" type="radio"/>	<input type="radio"/>
Barcode reader	<input type="radio"/>	<input type="radio"/>	<input type="radio"/>
Modular traysholder	<input type="radio"/>	<input type="radio"/>	<input type="radio"/>
MyTrace	<input type="radio"/>	<input type="radio"/>	<input checked="" type="radio"/>
Di.V.A.	<input checked="" type="radio"/>	<input type="radio"/>	Annual license <input checked="" type="radio"/>

Supplied

Available

Not available

Technical data

Technical data	Classic 17	Classic 22	Classic 28	Futura 17	Futura 22	Futura 28	Supreme 17	Supreme 22	Supreme 28
Power supply voltage	220/240 V 50Hz 220/230 V 60HZ 120V 60HZ								
Rated power	2300 W 1440W (120 V - 60Hz)								
External dimensions WxHxD	480 x 500 x 600 mm								
Chamber dimensions (Diam. x Depth)	250 x 350 mm	250 x 450 mm	280 x 450 mm	250 x 350 mm	250 x 450 mm	280 x 450 mm	250 x 350 mm	250 x 450 mm	280 x 450 mm
Total weight	50 kg	51 kg	52 kg	51 kg	52 kg	53 kg	54 kg	55 kg	56 kg
Tank capacity	4,5l								
Autonomy (cycle)	7-11	6-10	5-9	7-11	6-10	5-9	40-50	40-50	40-50
Duration of filters (water in 600 µS/cm)	-			120l			-		
Duration of filters (demineralizer + recirculation)	-			-			500 cycles		

Sterilization Cycle

Cycle	Cycle type	Sterilization time	B Classic	B Futura	Supreme	Drying*
134°C Universal	B	4	29-39	27-37	27-37	13-17
121°C Universal	B	20	45-52	43-50	43-50	13-17
134°C Prion	B	18	43-53	42-51	42-51	13-17
134°C Wrapped solid instruments	S	4	20-28	18-26	18-26	13-17
134°C Unwrapped hollow instruments	S	4	31-38	29-36	29-36	4-6
Custom cycle	S	Cycle can be personalised by user at temperatures 134 °C / 121 °C, process times starting from 4' (134 °C) or 20' (121 °C) with adjustable drying				
Vacuum Test	Test		18-19	18-19	18-19	
Helix/B&D Test	Test		20-28	20-28	20-28	
Vacuum + Helix/B&D Test	Test		42-51	42-51	42-51	

* Drying varies according to machine model and volume

Note: times do not take the max. pre-heating time into account.

Note: times may vary depending on the load and power supply.

Note: 120 V model times may undergo increments up to a max. of 20%.

